



Fire Hydrant Water Meter

Model FY

Portable turbo water meter.

Features:

- Lightweight.
- Lockable carrying handle prevents unauthorized access to the register.
- Vacuum sealed register in stainless steel housing & heat treated glass.
- Interchangeable measuring element.
- 3" NPT female end threads enable attachment of various fire hydrant couplings.
- Built-in protection strainer.

Applications

Temporary use for measuring water consumption in building sites.

Available Sizes

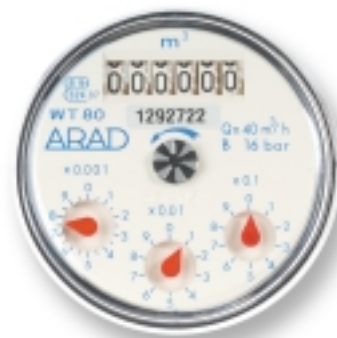
3" (80 mm)

Standards

American FM standard approved.

Technical Specifications

Maximum Working Pressure	10 bar
Maximum Working Temperature	50° C
Maximum flow rate for intermittent use	110m ³ /h
Body	Aluminum
Connections to hydrant and downstream pipe	By suitable matching couplings
Operating flowrates range	1:75 m ³ /h
Head loss	1m at 80 m ³ /h



FY type dial



- Woltman meters
- Irrigation & Agriculture
- Compound meters
- Fire Service meters
- FY
- Electromagnetic & Ultrasonic

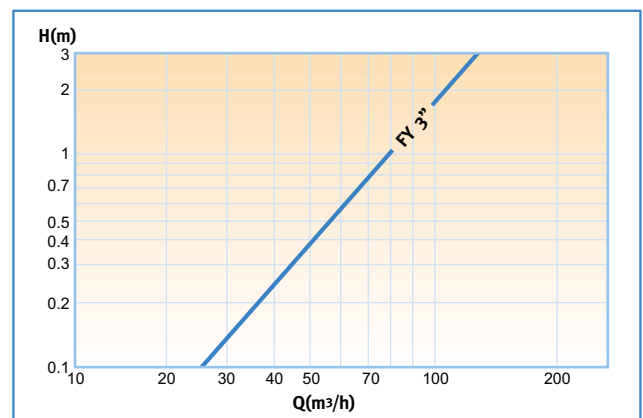
Performance data:

Model FY		Qmax Maximum flowrate (m ³ /h)	Qn ISO 4064 (m ³ /h)	Qn Nominal Flowrate (m ³ /h)	Qt Transitional Flowrate (m ³ /h)	Qmin Minimum Flowrate (m ³ /h)	Starting Flow (m ³ /h)	Maximum register capacity (m ³ /h)	Smallest readable unit (liter)	Accuracy between Qmax & Qt	Accuracy between Qt & Qmin
Nominal Size											
mm	inch										
80	3	110	40	75	1.4	1	0.4	10 ⁶	1	±2%	±5%

Dimensions

Model	FY	
Nominal size	(mm)	80
	(inch)	3
Length with connections (mm)	430	
Height (mm)	300	
Width (mm)	170	
Weight (kg)	8.9	

Head Loss Curve



Installation Requirements

- The water meter may be installed in any position.
- The meter shall be full of water while operating.

